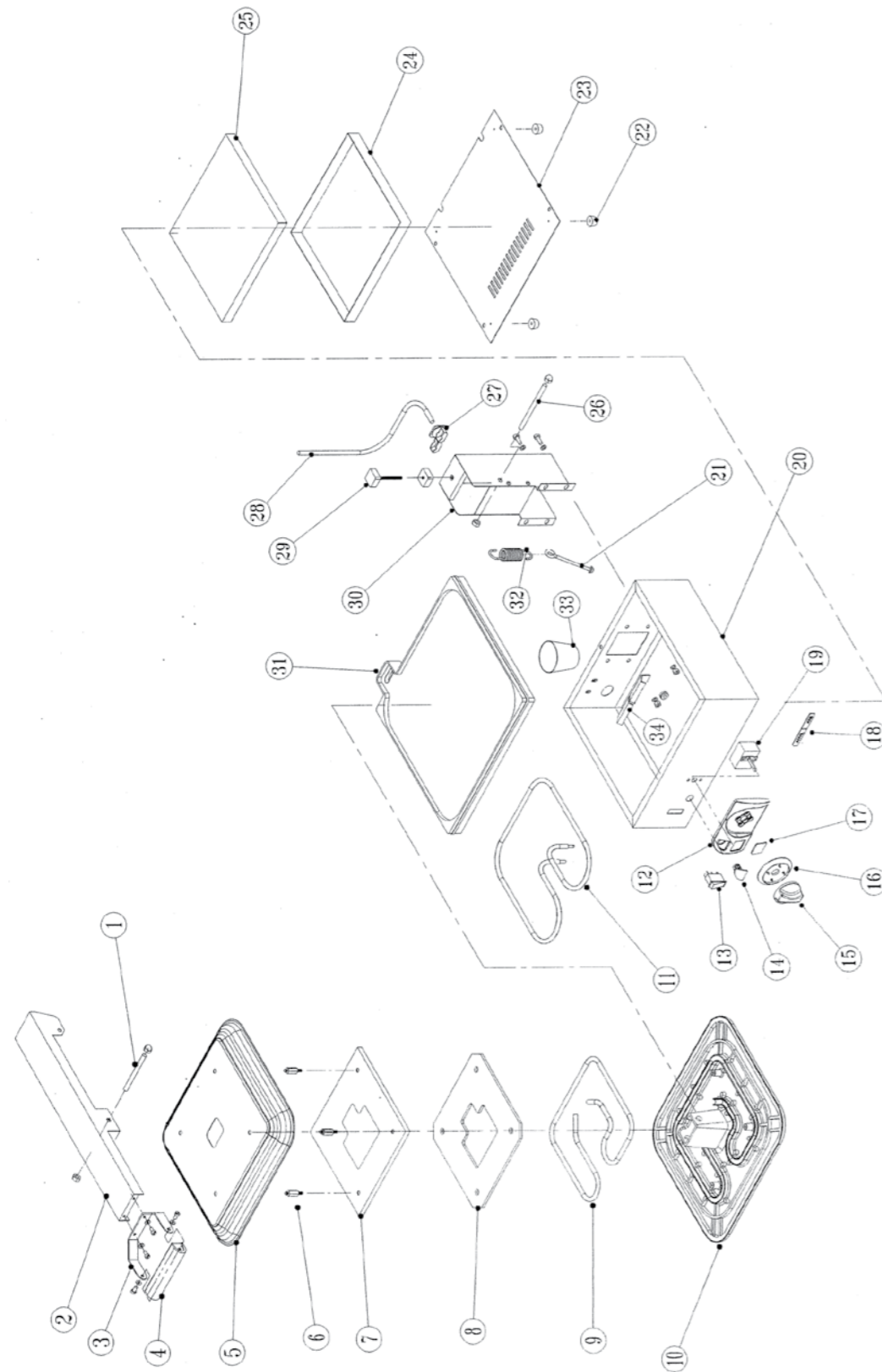


TSA5009

TSA5009



STOCK CODE	DESCRIPTION	MAN.PART NUMBER	DRAWING REF
XTSA2002	TOASTER ANVIL (TSA1009) - HANDLE STUD	6-TOASTER-HS	1
XTSA2006	N/A DISC TOASTER ANVIL - S/S HANDLE GRIP (SEE XTSA5008)	82-ARM-SS-HAFRT	3
XTSA1011	TOASTER ANVIL (TSA1009)- BAKELITE HANDLE	3-TOASTER-HAND	4
XTSA2007	TOASTER ANVIL - PRESSED S/S COVER PLATE	81-TS9-9S-LID	5
XTSA2001	TOASTER ANVIL (TSA1009) - LID STUD	6-TOASTER-LS	6
XTSA1016	TOASTER ANVIL (TSA1009)-MILLBOARD	82-TS9-MB-MBPAD	8
XTSA5001	TOASTER ANVIL (TSA1009) - TOP ELEMENT-1050W	5-950W-TOASTER	9
XTSA4004	TOASTER ANVIL(TSA4009) {TSA9009} -TOP PLATE COATED	7-PAN-TOP-TEF	10
XTSA5002	TOASTER ANVIL (TSA1009) - BOTTOM ELEMENT-920W	5-1200W-TOASTER	11
XKNB0010	CONTROL PANEL FASICA AXIS	3-CPF-AXIS	12
XWMW1002	WRAPMASTER MAINS ROCKER SWITCH (2-PIN)	1-RS-NI	13
XKNB0035	PILOT LIGHT RED 230V	1-PL-BMA0001	14
XKNB0001	CONTROL KNOB [AXIS] - RED	3-CK-AXIS	15
XKNB0034	CONTROL PANEL BEZEL AXIS THERMOSTAT SCALE (80-240C)	3-CPB-TSA2009	16
XKNB0039	CONTROL PANEL INSERT THERMOSTAT/ENERGY REGULATOR	4-CPI-TEMP	17
XKNB0006	DOMED LOGO LARGE AXIS	4-DL-L-AXIS	18
XTSA4001	TOASTER ANVIL (TSA3009) - THERMOSTAT	1-THERMO-TO-TEF	19
XTSA1015	TOASTER ANVIL (TSA1009) - RUBBER FOOT	3-S-RDS	22
XTSA5010	BOTTOM COVER FOR TOASTERS	82-TS9-GL-BOTCV	23
XTSA1007	TOASTER ANVIL (TSA1009) - BOTTOM ELEMENT COVER	82-TS9-MS-BELCV	24
XTSA1017	TOASTER ANVIL (TSA1009)- FIBREFAX	3-25-FIBRERAX	25
XTSA0010	TOASTER ANVIL (TSA1009) - CABLE CLAMP	3-CG-1.5	27
XTSA5014	TOASTER ANVIL (TSA3009) - THUMB SCREW	3-KNOB-TOAST	29
XTSA2005	TOASTER ANVIL(TSA2009)- BOTTOM PLATE	7-TC-BOT-TEF	31
XTSA2008	TOASTER ANVIL (TSA3009) - HANDLE SPRING - SHORT	7-PANINI-SPRING	32
XTSA1009	TOASTER ANVIL-DRIP CUP	7-FCUP-TOASTER	33

