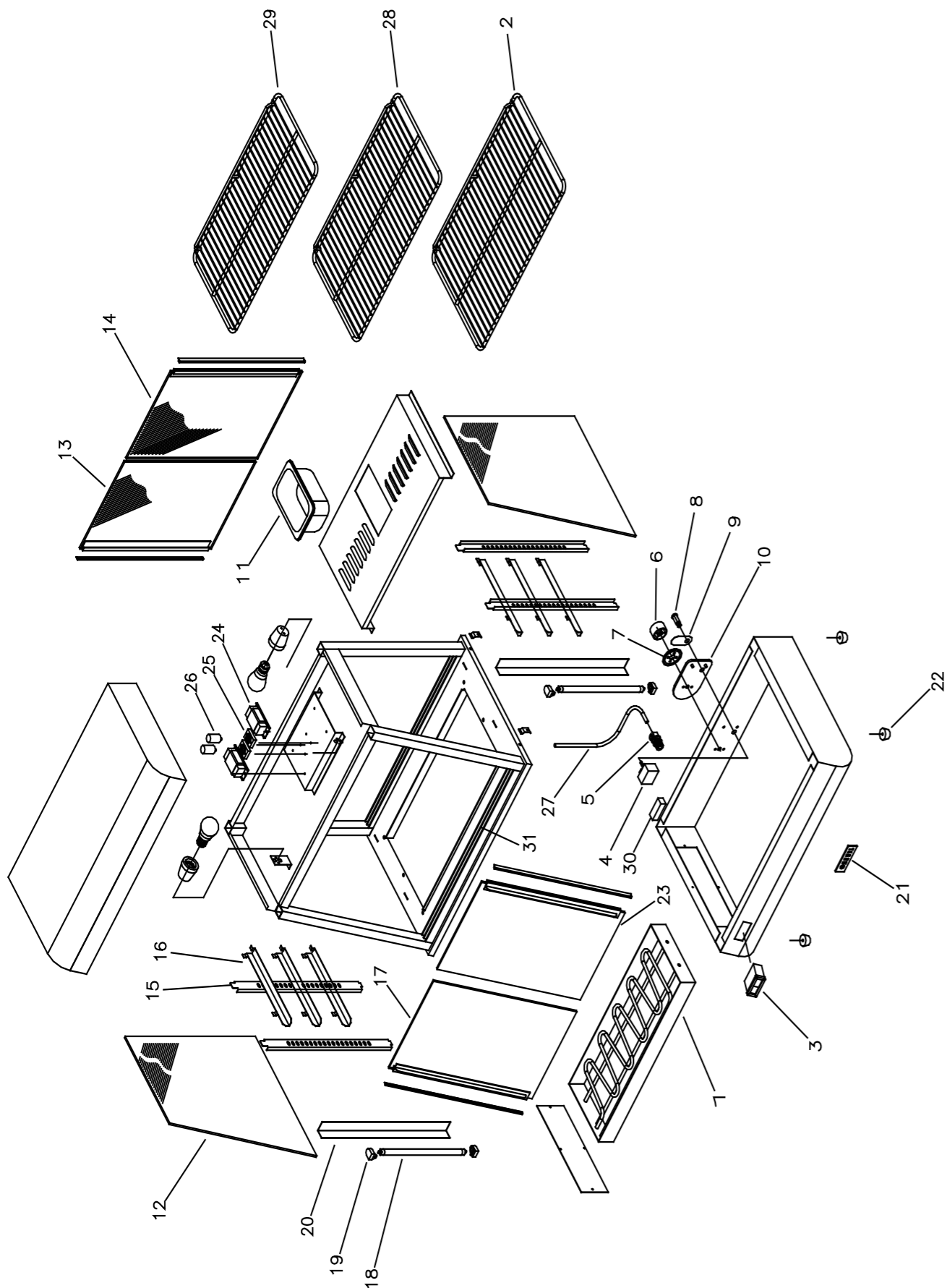


PWK0002

PWK0002



STOCK CODE	DESCRIPTION	MAN.PART NUMBER	DRAWING REF
XPWK0004	PIE WARMER ANVIL 1840W ELEMENT - PWK0002	5-1840W-PWK0002	1
XPWK1009	PIE WARMER - INDICATING THERMOMETER PWK0002/5	1-THER-PWK0002	3
XPWK1005	PLATE WARMER ANVIL- THERMO 30 - 110	1-EGO-50	4
XPWK1042	PIE WARMER (PWK0002/4/5) - CABLE GLAND	3-CABLE-GLAND	5
XPWK1043	PIE WARMER (PWK0002/4/5) - GENERIC CONTROL KNOB BLACK	3-KNOB-GEN	6
XFFA0002	ANVIL FRYER - PILOT LIGHT	1-PL-GP	8
XPWK1044	PIE WARMER TEMP SCALE	3-SCALE-PWK0001	7
XPWK0012	PIE WARMER SIDE GLASS - PWK0002/PWK0003	10-GLA-PWK002-S	12
XPWK0030	LEFT/RIGHT SHELF SUPPORT - PWK0002 (SET OF 2)	10-SR-PWK0002	15
XPWK0026	PIE WARMER - BULB HOLDER ONLY	1-LBH-PMK0001	19
XPWK1045	PIE WARMER (PWK0002/4/5) - RUBBER FOOT	3-RUBBER-FOOT	22
XPWK1031	FRONT SLIDING GLASS - PWK0002 (L + R)	10-GLA-PWK0002-D	23
XPWK1014	11W BALLAST FOR PWK0002 & PWK0003	1-BAL-PWK0002	24
XIEA0003	INSECT EXTERMINATOR-STARTER(220V)	1-ST-IEA0660	26
XPWK1019	SHELF - PWK0004 600MM	10-SHE-PWK002-2	28
XPWK1020	PWK0002/PWK0003 - SHELF FOR PIE WARMER-SMALL	10-SHE-PWK002-3	29
XPWK1011	PIE WARMER (PWK0002) - REAR (L & R) GLASS	10-GLA-PWK002- REAR (L+R)	13 + 14