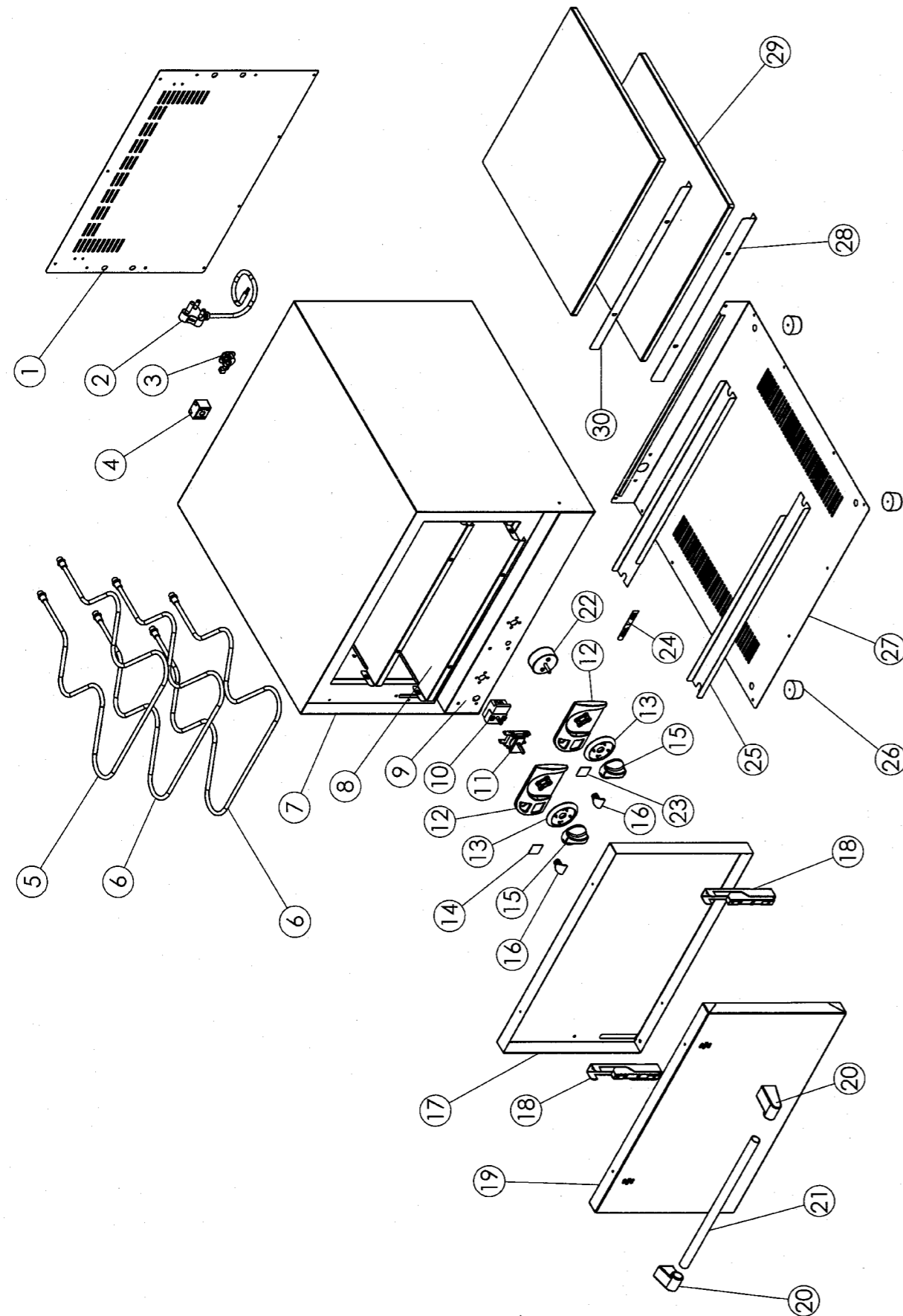


POA1001



POA1001

STOCK CODE	DESCRIPTION	MAN.PART NUMBER	DRAWING REF
XPCB0002	POWER CORD WITH PLUG-BLACK 16A (1.5m)	2-PC-CE-DR	2
XTSA0010	TOASTER ANVIL (TSA1009) - CABLE CLAMP	3-CG-1.5	3
XTSA1018	TOASTER ANVIL (TSA1009) - CONNECT BLOCK	3-CB-15AMP	4
XPOA0007	PIZZA OVEN TWIN DECK - ELEMENT 850W	5-850W-POA8001	5
XPOA0008	PIZZA OVEN TWIN DECK - ELEMENT 1000W	5-1000W-POA8001	6
XPOA0016	PIZZA OVEN TWIN DECK - THERMOSTAT	1-THERM-POA7001	10
XPOA0035	PIZZA OVEN TWIN DECK - SELECTOR SWITCH	1-SW-POA7001	11
XKNB0032	CONTROL PANEL BEZEL AXIS THERMOSTAT SCALE (60-395C)	3-CPB-POA1001	13
XKNB0010	CONTROL PANEL FASICA AXIS	3-CPF-AXIS	12
XKNB0001	CONTROL KNOB [AXIS] - RED	3-CK-AXIS	15
XKNB0035	PILOT LIGHT RED 230V	1-PL-BMA0001	16
XPOA0009	PIZZA OVEN TWIN DECK - DOOR INNER	82-POT-SS-INDOR	17
XPOA0017	PIZZA OVEN TWIN DECK - DOOR HINGE	7-HINGE-COA7001	18
XPOA0010	PIZZA OVEN TWIN DECK - DOOR HANDLE KNOB	3-DH-COA1001	20
XPOA0011	PIZZA OVEN TWIN DECK - DOOR HANDLE TUBE	82-POT-SS-HAND	21
XPOA0012	PIZZA OVEN TWIN DECK - TIMER	1-TIM-TSA7209MC	22
XKNB0006	DOMED LOGO LARGE AXIS	4-DL-L-AXIS	24
XFFA2001	ANVIL FRYER [ALL] - RUBBER FEET LRG	3-L-RDS	26

