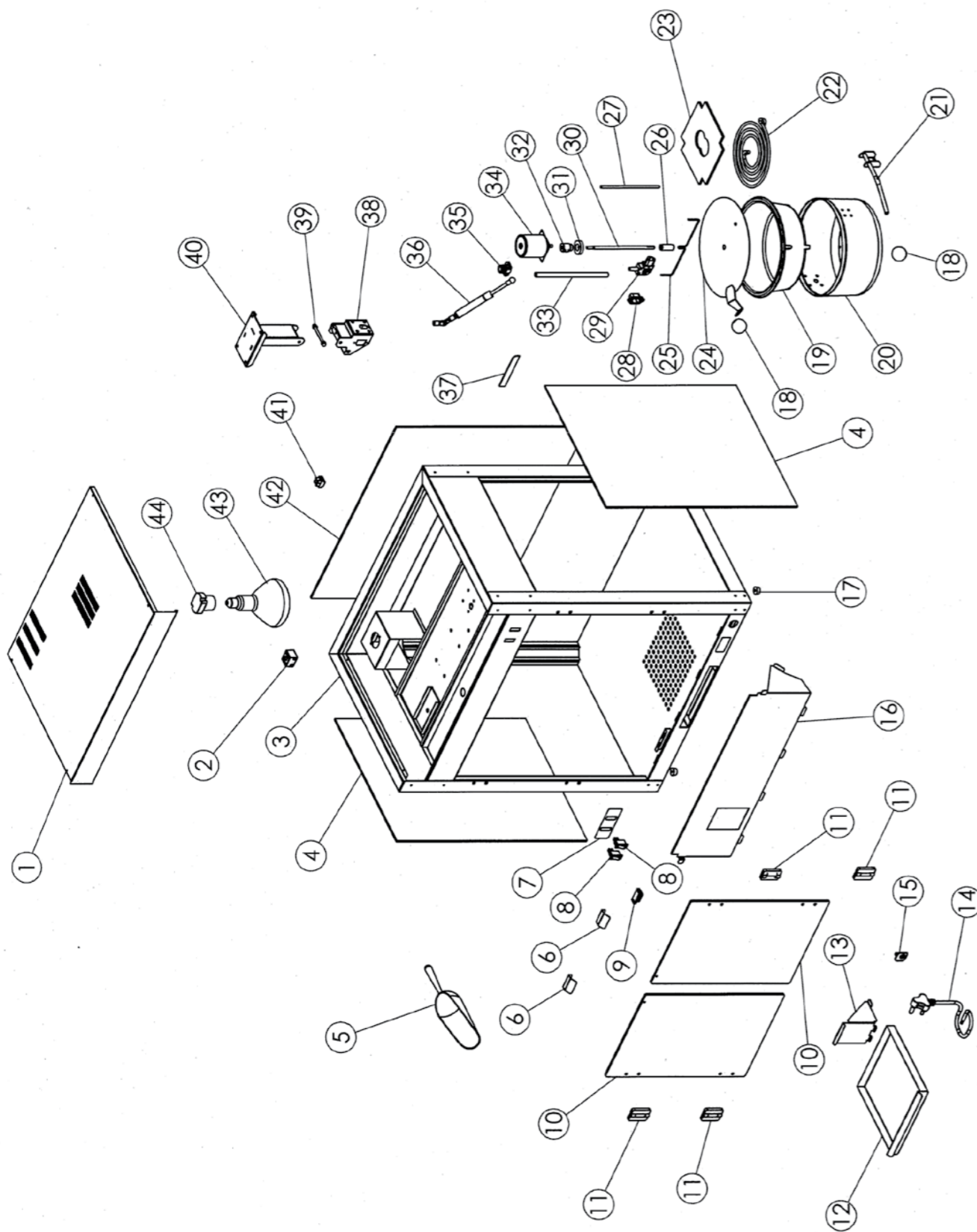


PMK0002

PMK0002



STOCK CODE	DESCRIPTION	MAN.PART NUMBER	DRAWING REF
XPMK4000	POPCORN MACHINE 16OZ - TERMINAL BLOCK	3-PTB-TSA1009	2
XPMK4029	POPCORN MACHINE 16OZ - SIDE GLASS (TEMP)	10-GLA-PMK002-S	4
XPMK4018	POPCORN MACHINE 16OZ - DOOR HANDLE	82-PM2-SS-HAND	6
XWMW0002	WRAPMASTER MAINS ROCKER SWITCH (3-PIN)	1-17TAF	8
XPMK4019	POPCORN MACHINE 16OZ - DOOR MAGNET	7-MAG-PWA0001	9
XPMK4017	POPCORN MACHINE 16OZ - PERSPEX DOOR	10-GLA-PMK002-D	10
XPMK4031	POPCORN MACHINE 16OZ - DOOR HINGE	7-HINGE-CGA0008	11
XTSA0010	TOASTER ANVIL (TSA1009) - CABLE CLAMP	3-CG-1.5	15
XTSA1015	TOASTER ANVIL (TSA1009) - RUBBER FOOT	3-S-RDS	17
XPMK4007	POPCORN MACHINE 16OZ - KNOB	7-PM-130010	18
XPMK4008	POPCORN MACHINE 16OZ - KETTLE CASTING	7-POT-PMK0002	19
XPMK4013	POPCORN MACHINE 16OZ - POT	7-KP-PMK0002	20
XPMK4012	POPCORN MACHINE 16OZ - POT HANDLE	82-PM2-SS-PHBKT	21
XPMK4010	POPCORN MACHINE 16OZ - 1800W ELEMENT	5-1800W-PMK0002	22
XPMK4014	POPCORN MACHINE 16OZ - MILL BOARD	82-PM2-MB-INPAD	23
XPMK4005	POPCORN MACHINE 16OZ - STIRRER WEIGHT	6-SW-PMK0002	26
XPMK4003	POPCORN MACHINE 16OZ - LID GUIDE	6-PLG-PMK0002	27
XPMK4032	POPCORN MACHINE 16OZ - IEC CONNECTOR	1-RL-CONECTOR	28
XPMK4023	POPCORN MACHINE 16OZ - IEC PLUG	1-PLUG-PMK0002	29
XPMK4004	POPCORN MACHINE 16OZ - STIRRER SHAFT	6-SE-PMK0002	30
XPMK4002	POPCORN MACHINE 16OZ - LID MAGNET	7-MAG-PMK0002	31
XPMK4001	POPCORN MACHINE 16OZ - LID MAGNET BOSS	6-MB-PMK0002	32
XPMK4040	ANVIL POPCORN M/C (PMK0001R01)STIRRER MOTOR	1-MOT-PMK0001A	34
XPMK4024	POPCORN MACHINE 16OZ - GAS LIFT	7-GL-PMK0002	36
XKNB0006	DOMED LOGO LARGE AXIS	4-DL-L-AXIS	37
XPMK4022	POPCORN MACHINE 16OZ - POT PIVOT	6-PP-PMK0002	39
XFFA0006	ANVIL FRYER - CONNECTING BLOCK	3-FF-CB	41
XPMK4028	POPCORN MACHINE 16OZ - FRONT GLASS (TEMP)	10-GLA-PMK002-F	42
XPMK4026	POPCORN MACHINE 16OZ - LAMP HOLDER	1-LH-PWA0001	44

