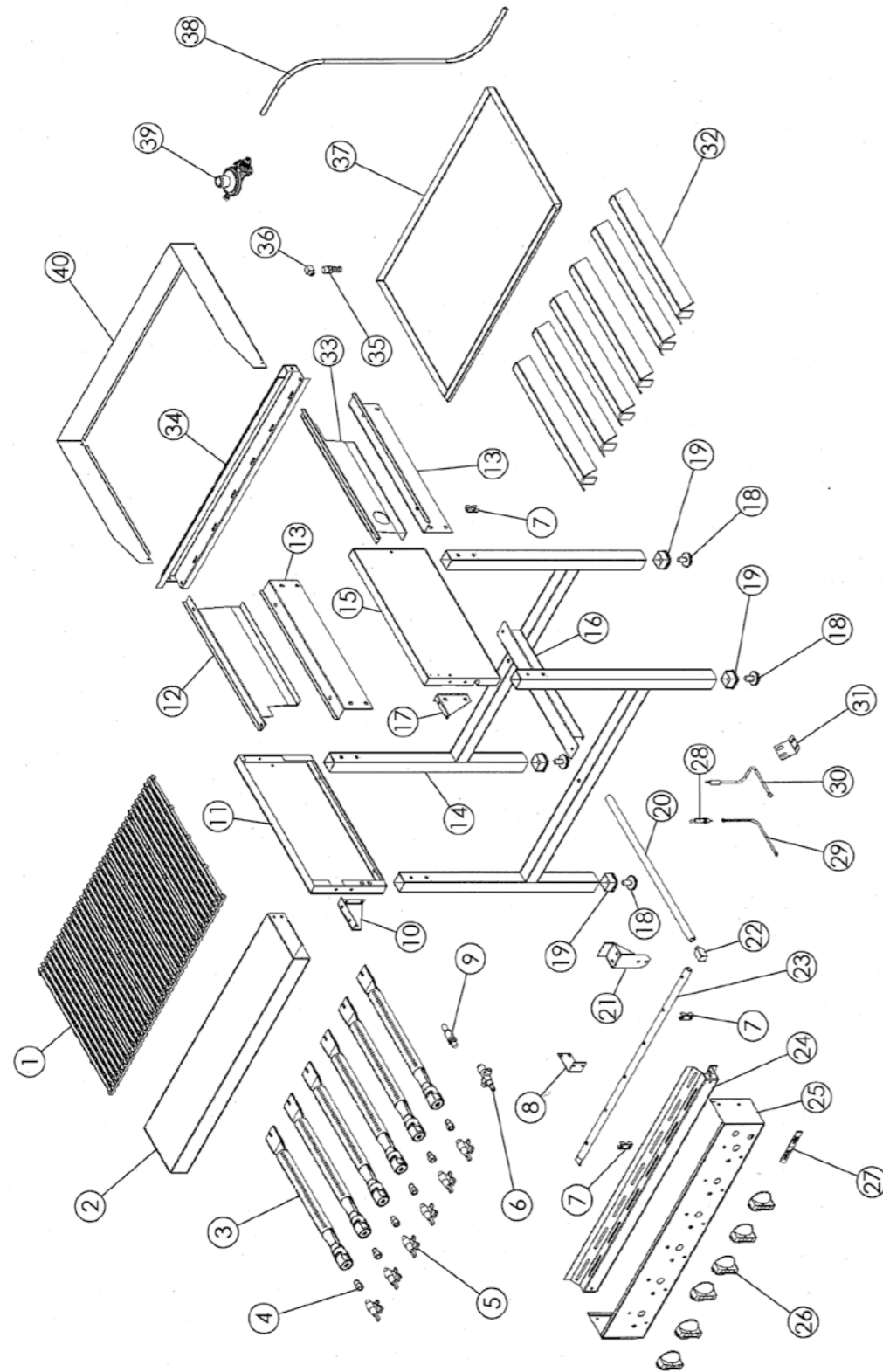


GGA3006

GGA3006



| STOCK CODE | DESCRIPTION | MAN.PART NUMBER | DRAWING REF |
|------------|--|-----------------|-------------|
| XGGA0003 | GAS GRILLER ANVIL 6 BURNER - GRIDS | 7-RAD-GRID | 1 |
| XGGA0001 | GAS GRILLER ANVIL - BURNER | 7-BURNER-CBR006 | 3 |
| XGGA0028 | GAS GRILLER WITH BLACK KNOB - JET | 7-JET-GGA0004 | 4 |
| XGGA0027 | GAS GRILLER - CONTROL VALVE | 7-CV-GGA0004 | 5 |
| XBMA0035 | BAIN MARIE GAS - SAFETY VALVE | 7-SV-GGA0004 | 6 |
| XBMA0034 | BAIN MARIE GAS - BC096-36-MANIFOLD CLAMP | 82-NGC-SS-MCLMP | 7 |
| XFFA2013 | ANVIL [GAS] - IGNITION SWITCH | 7-GAS-IS | 9 |
| XFTA0012 | FLAT TOP ANVIL - ADJUSTABLE FEET | 3-ADJ-PF | 18 |
| XBTG0008 | 4- BURNER BOILING TABLE-38MM SQUARE PLASTIC PLUG | 3-TP38-COR1005 | 19 |
| XBMA0027 | BAIN MARIE GAS - MANIFOLD ELBOW | 7-ELB-GGA0004 | 22 |
| XGGA0029 | GAS GRILLER - BLACK KNOB FOR - GGA3010 | 3-KNOB-GGA0004 | 26 |
| XKNB0006 | DOMED LOGO LARGE AXIS | 4-DL-L-AXIS | 27 |
| XFFA2012 | ANVIL [GAS] - SPARK PLUG | 7-GAS-SP | 28 |
| XFFA2014 | ANVIL [GAS] - SILICON WIRE | 7-GAS-IS-WIRE | 29 |
| XBMA0036 | BAIN MARIE GAS - THERMOCOUPLE | 7-TC-GGA0004 | 30 |
| XGGA0011 | GAS GRILLER - BURNER SHIELD (COVER) | 82-NGC-MS-RAD | 32 |
| XFFA2022 | GAS FRYER BRASS CONNECTOR | 7-REG-ADP | 35 |
| XGGA0013 | GAS GRILLER - FAT TRAY - 6 BURNER | 82-NG6-MS-FTRAY | 37 |
| XFFA2006 | ANVIL FRYER [GAS] - GAS REGULATOR | 7-BNR-LPG | 39 |