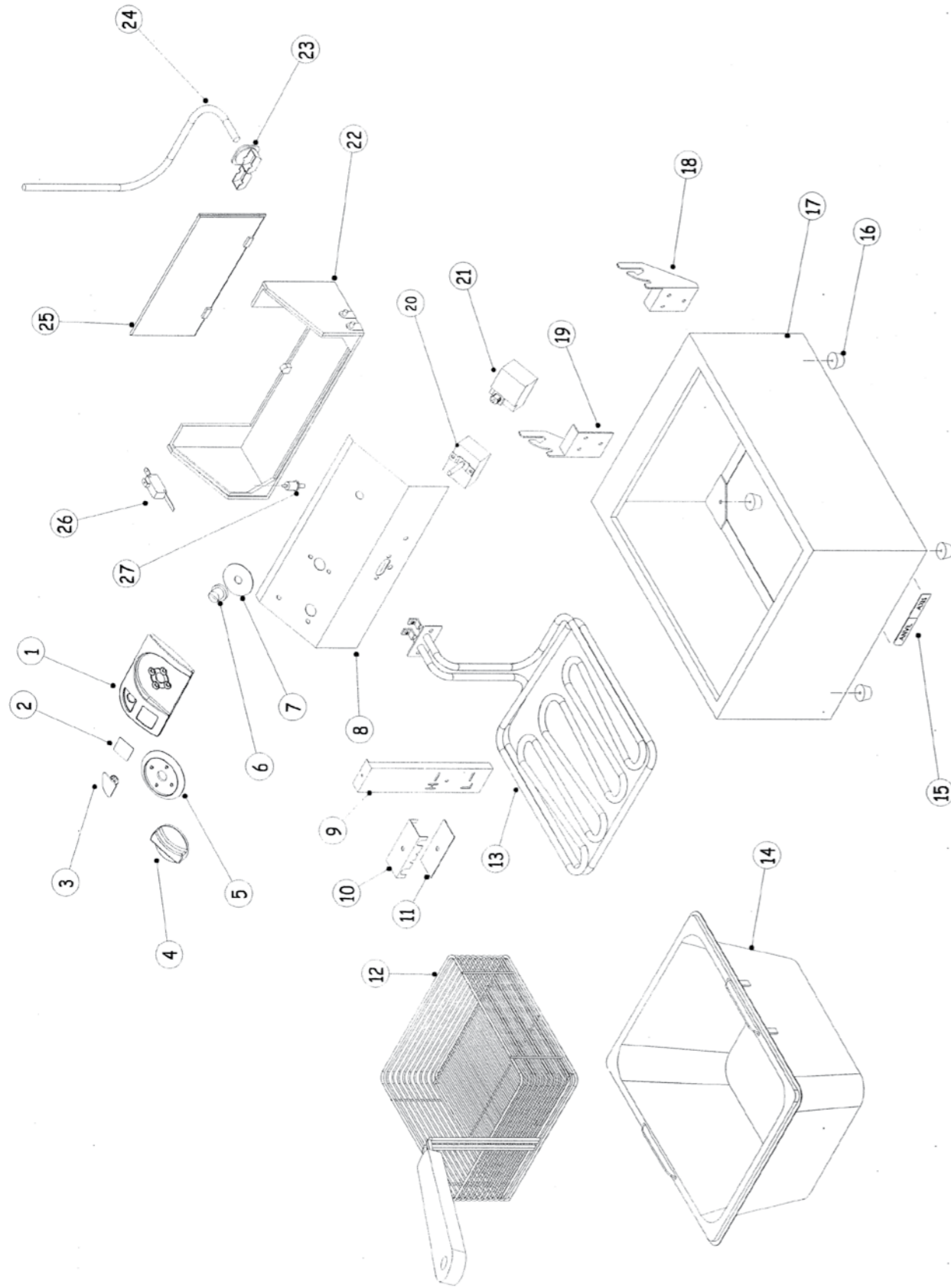


FFA5001

FFA5001



STOCK CODE	DESCRIPTION	MAN.PART NUMBER	DRAWING REF
XFFA0002	ANVIL FRYER - PILOT LIGHT	1-PL-GP	3
XFFA1003	ANVIL FRYER - FACIA CONTROL PANEL INSERT	4-ANVIL-CP-IN-1	2
XFFA0001	ANVIL FRYER - THERMO KNOB	3-KNOB-FF	4
XFFA1001	ANVIL FRYER - FACIA CONTROL PANEL	3-CP-ANVIL	1
XFFA0013	ANVIL FRYER - SAFETY CUTOUT CAP	3-FF-SAF-CAP	6
XFFA0014	ANVIL FRYER - SAFETY CUTOUT DECAL	4-FACIA-SAFETY	7
XFFA5003	ANVIL/McCAINS FRYER - ELEMENT	5-3400W-FF	13
XKNB0006	DOMED LOGO LARGE AXIS	4-DL-L-AXIS	15
XFFA0011	ANVIL FRYER - OVERTEMP THERMOSTAT(FFA1002 ONLY)	1-THERMO-FF-SAF	21
XFFA0005	ANVIL FRYER - THERMOSTAT	1-THERMO-FF-UL	20
XFFA5004	ANVIL/McCAINS FRYER - ELEMENT BOX	3-FF-ELEMENTBOX	22
XTSA0010	TOASTER ANVIL (TSA1009) - CABLE CLAMP	3-CG-1.5	23
XPCB0002	POWER CORD WITH PLUG-BLACK 16A (1.5m)	2-PC-CE-DR	24
XFFA0010	ANVIL FRYER - MICROSWITCH	1-FF-MICRSWITCH	26
XFFA0004	ANVIL FRYER - MICRO SWITCH PIN	3-MS-FFA0001	27

