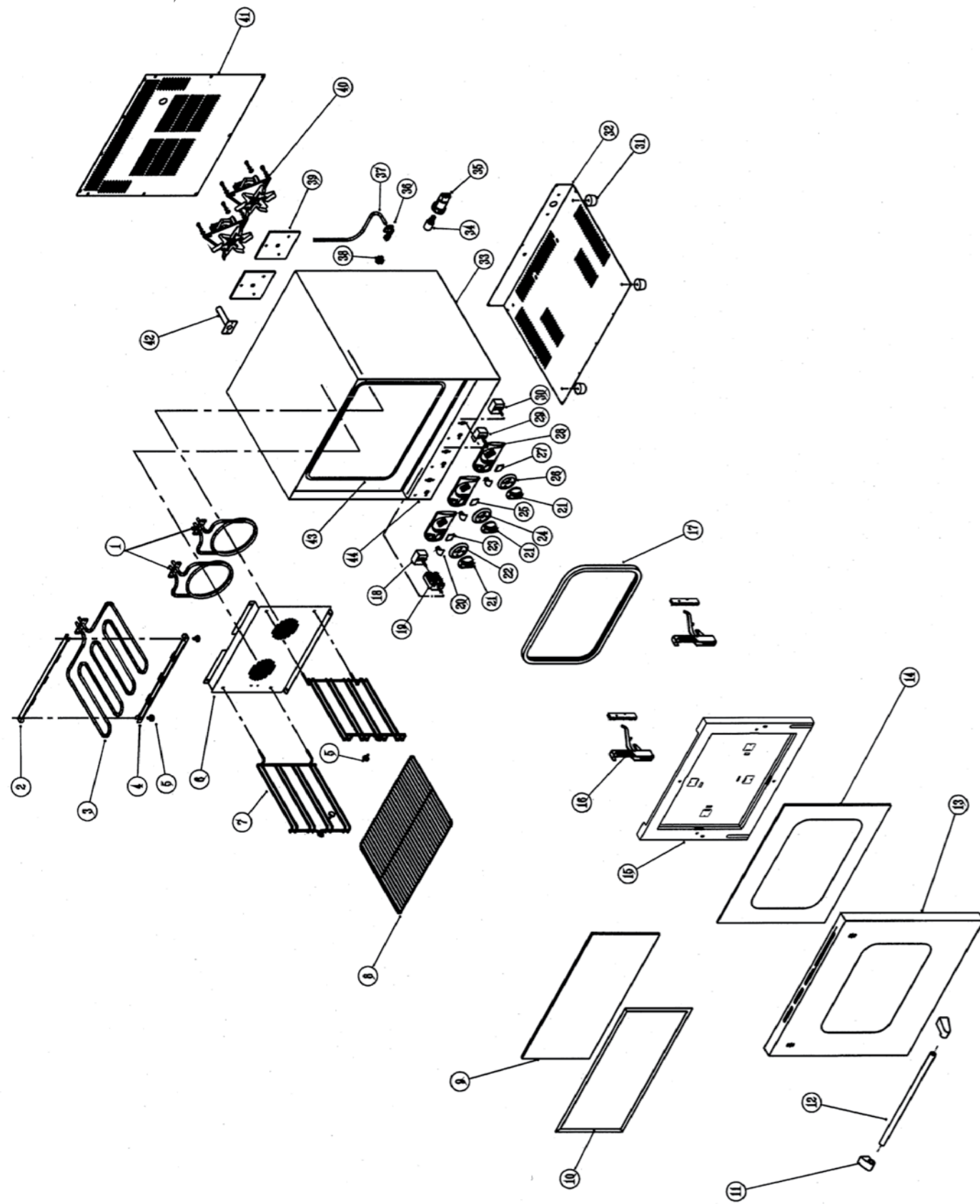


COA1004



COA1004

| STOCK CODE | DESCRIPTION | MAN.PART NUMBER | DRAWING REF |
|------------|--|-----------------|-------------|
| XCOA6001 | CONVECTION OVEN ANVIL-CONVECTION ELEMENT | 5-1200W-CAT-BAK | 1 |
| XCOA6002 | CONVECTION OVEN ANVIL-GRILL ELEMENT | 5-2400W-CAT-GRI | 3 |
| XCOA6015 | CONVECTION OVEN ANVIL-THUMB SCREW | 6-OVEN-SHE-TS-1 | 5 |
| XCOA6014 | CONVECTION OVEN ANVIL-SHELF RUNNER | 10-SR-COA1003-1 | 7 |
| COA2003 | PRIMA/PRO OVEN ANVIL - SHELF FOR PRIMA | 10-SHE-COA103-1 | 8 |
| XCOA8049 | CONV OVEN PRIMA PRO INNER GLASS(470x357 | 10-GLA-COA803-I | 9 |
| XCOA8056 | CONV OVEN ANVIL - INNER DOOR SEAL FOR PRIMA PRO | 3-IDS-COA1003 | 10 |
| XCOA8089 | CONV OVEN GAS 4 & 6 BURNER - HANDLE TERMINALS NEW | 3-DH-COA1001 | 11 |
| XCOA8061 | CONVECTION OVEN PRIMA - OUTER GLASS(s/steel frame | 10-GLA-COA803-O | 14 |
| XCOA6009 | CONVECTION OVEN ANVIL - HINGE | 7-OVEN-HINGE | 16 |
| XCOA6010 | CONVECTION OVEN ANVIL-DOOR SEAL | 3-OVEN-SEAL | 17 |
| XCOA6006 | CONVECTION OVEN ANVIL-SELECTOR SWITCH | 1-SEL-SWITCH | 19 |
| XKNB0035 | PILOT LIGHT RED 230V | 1-PL-BMA0001 | 20 |
| XKNB0001 | CONTROL KNOB [AXIS] - RED | 3-CK-AXIS | 21 |
| XKNB0019 | CONTROL PANEL BEZEL AXIS 120 MINUTE SCALE(0-120MIN | 3-CPB-120MIN | 22 |
| XKNB0036 | CONTROL PANEL INSERT TIMER SYMBOL | 4-CPI-TIMER | 23 |
| XKNB0030 | CONTROL PANEL BEZEL AXIS THERMOSTAT SCALE 50-300C | 3-CPB-FTA0400 | 24 |
| XKNB0038 | CONTROL PANEL INSERT GRILL SYMBOL | 4-CPI-GRILL | 25 |
| XKNB0028 | CONTROL PANEL BEZEL AXIS THERMOSTAT SCALE 50-300 | 3-CPB-COA0001 | 26 |
| XKNB0037 | CONTROL PANEL INSERT BAKE SYMBOL | 4-CPI-BAKE | 27 |
| XKNB0010 | CONTROL PANEL FASICA AXIS | 3-CPF-AXIS | 28 |
| XCOA6005 | CONVECTION OVEN ANVIL-TIMER (120 MIN) | 1-2HR-TIMER | 30 |
| XFFA2001 | ANVIL FRYER [ALL] - RUBBER FEET LRG | 3-L-RDS | 31 |
| XCOA8004 | CONVECTION OVEN ANVIL/GARBIN OVEN LAMP 25W | 1-LB-COA1001 | 34 |
| XCOA6017 | CONVECTION OVEN ANVIL-LIGHTHOLDER & BULB | 1-OVEN-LH | 35 |
| XTSA0010 | TOASTER ANVIL (TSA1009) - CABLE CLAMP | 3-CG-1.5 | 36 |
| XPCA0017 | CREPE MACHINE - POWER CORD | 2-PC-CE-CP | 37 |
| XFFA0006 | ANVIL FRYER - CONNECTING BLOCK | 3-FF-CB | 38 |
| XCOA6003 | CONV OVEN PRIMA ANVIL-FAN AND MOTOR | 1-FAN-COA1003 | 40 |
| XTSA1001 | TOASTER ANVIL (TSA1009) - THERMOSTAT | 1-EGO-150 | 18 / 29 |

