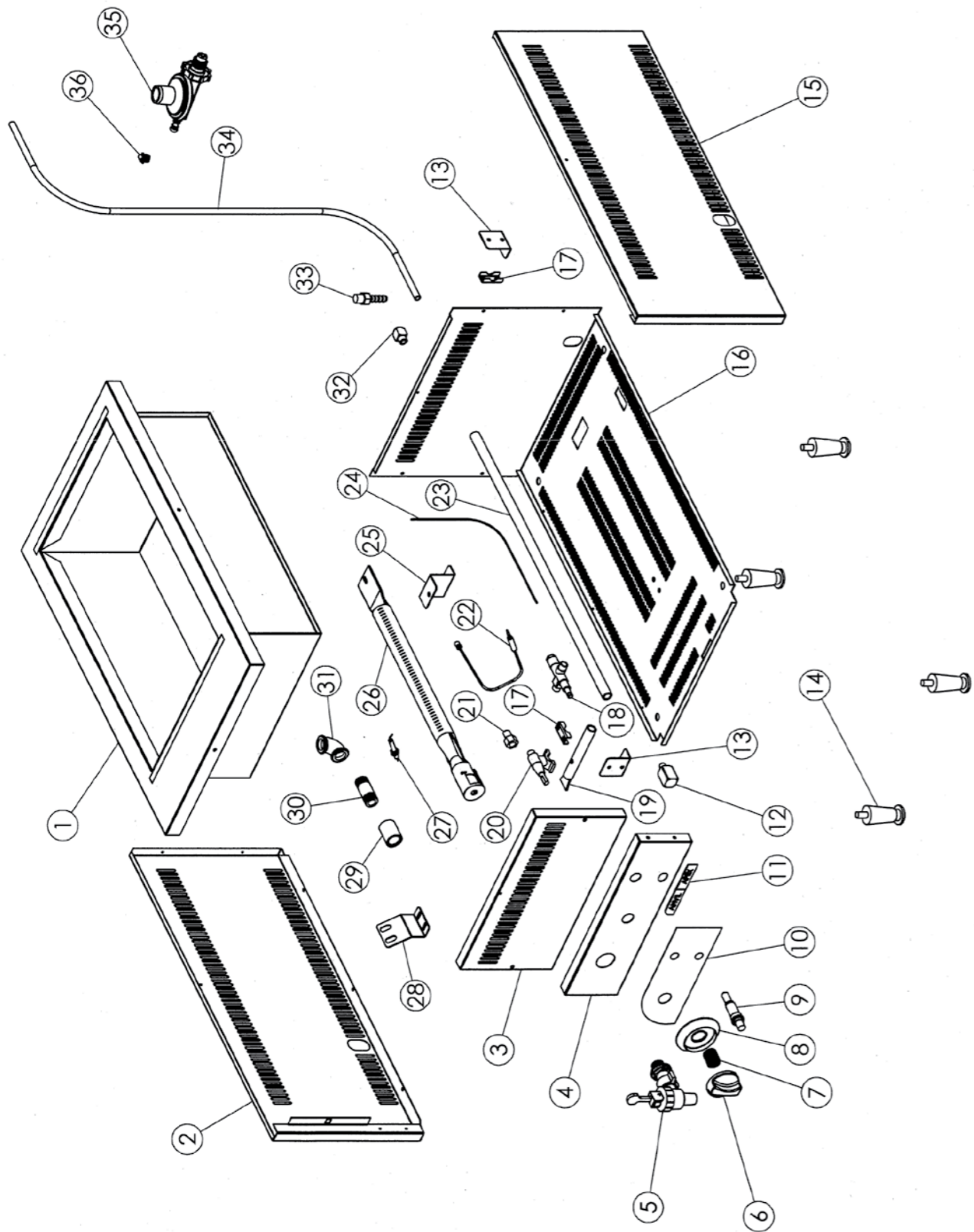


BMA3001

BMA3001



STOCK CODE	DESCRIPTION	MAN.PART NUMBER	DRAWING REF
XBMA0021	BAIN MARIE GAS - INNER TANK ASSEMBLY	82-BM1-SS-INASS	1
XBMA0022	BAIN MARIE GAS - LEFT SIDE PANEL	82-GBM-SS-LHSPN	2
XBMA0023	BAIN MARIE GAS - UPPER FRONT ACCESS PANEL	82-GBM-SS-UFPN	3
XBMA0024	BAIN MARIE GAS - LOWER FRONT CONTROL PANEL	82-GBM-SS-LFPN	4
XBMA0007	BAIN MARIE ANVIL - COMPLETE TAP	7-DV-BAINMARIE	5
XKNB0001	CONTROL KNOB [AXIS] - RED	3-CK-AXIS	6
XKNB0018	APEX CONTROL KNOB SPRING	7-KS-APEX	7
XFFA2013	ANVIL [GAS] - IGNITION SWITCH	7-GAS-IS	9
XBMA0025	BAIN MARIE GAS - FACIA	4-FACIA-BMA3001	10
XKNB0005	DOMED LOGO LARGE APEX	4-DL-L-APEX	11
XBMA0027	BAIN MARIE GAS - MANIFOLD ELBOW	7-ELB-GGA0004	12
XBMA0034	BAIN MARIE GAS - BC096-36-MANIFOLD CLAMP	82-NGC-SS-MCLMP	17
XBMA0035	BAIN MARIE GAS - SAFETY VALVE	7-SV-GGA0004	18
XBMA0026	BAIN MARIE GAS - BURNER MANIFOLD	7-MAN-BMA3001	19
XGGA0027	CONTROL VALVE - BOILING TABLE	7-CV-GGA0004	20
XBMA0033	BAIN MARIE GAS - SPUD JET	7-JET-CGA0004	21
XBMA0036	BAIN MARIE GAS - THERMOCOUPLE	7-TC-GGA0004	22
XFFA2014	ANVIL [GAS] - SILICON WIRE	7-GAS-IS-WIRE	24
XGGA0001	GAS GRILLER ANVIL - BURNER	7-BURNER-CBR006	26
XFFA2012	ANVIL [GAS] - SPARK PLUG	7-GAS-SP	27
XBMA0030	BAIN MARIE GAS - THERMOCOUPLE & SPARK PLUG BRACKET	82-GBM-SS-PBKT	28
XBMA0031	BAIN MARIE GAS - 1/2" SOCKET	7-0.5-SOCKET-BMA 1/2	29
XFFA8083	GAS FRYER (CE) - TABLE TOP - DRAIN PIPE	6-PIPE-BMA0001	30
XBMA0032	BAIN MARIE GAS - 1/2 FEMALE ELBOW	7-0.5-ELB-BMA01	31
XFFA2022	GAS FRYER BRASS CONNECTOR	7-REG-ADP	33
XFFA2006	ANVIL FRYER [GAS] - GAS REGULATOR	7-BNR-LPG	35
XFFA2007	ANVIL FRYER [GAS] - GAS PIPE CLAMPS	7-HC-12MM	36